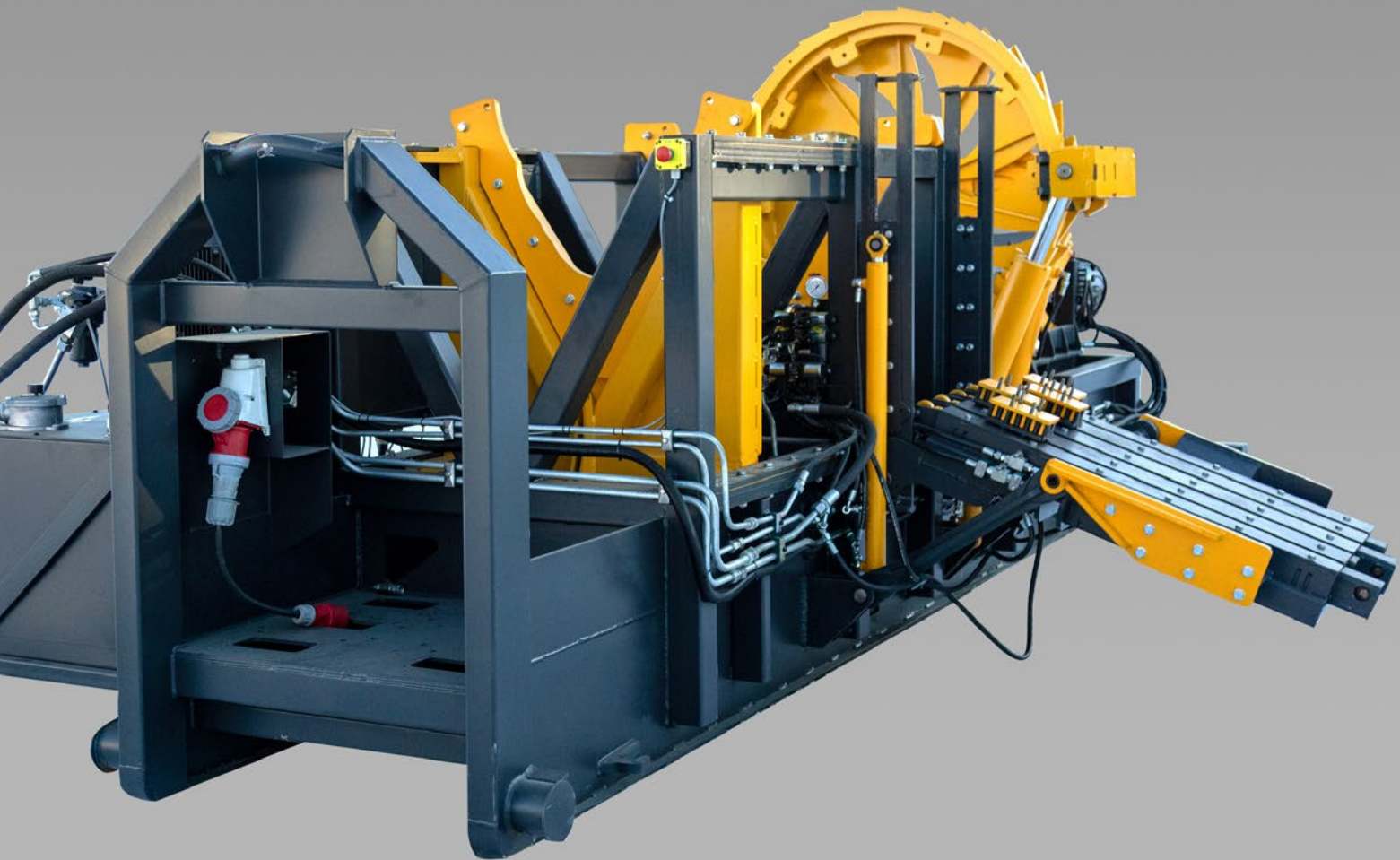




AP-900

BREAKOUT BENCH



**TOUGHEST
DTH DRILLING
TOOLS**

BREAKOUT BENCH AP-900

STRONGEST BREAKOUT BENCH IN THE WORLD

Opening large DTH-Hammers requires special equipment. During drilling, they tend to stuck in very tightly. TRI-MACH has designed and developed the strongest and most advanced Breakout Bench, with patented grip mechanism and Roll-Off Truck transport options. This means the AP-900 Breakout Bench is easily transferred to drilling sites.



- **Hammer Sizes = 8" - 36"**
- **Radio Controlled**
- **Patented hammer grip mechanism**
- **Transitable with Roll-Off Truck**

TECHNICAL DATA

HAMMER SIZES = 8" - 36"

BREAKOUT MOMENT =
900 KNM / 90 TON (MAX)

TOTAL WEIGHT = 6500 KG

ELECTRICAL SUPPLY

Operating Voltage: 3 × 400 V AC / N / PE / 50 Hz

Mains form: TN-S

Feed line fuse: 3 × 35 A

Conductor cross-section: min. 5G6 mm²

Protection level: IP66

DIMENSIONS

(transport position)

Height = 2200mm

Width = 2500mm

Length = 5800mm

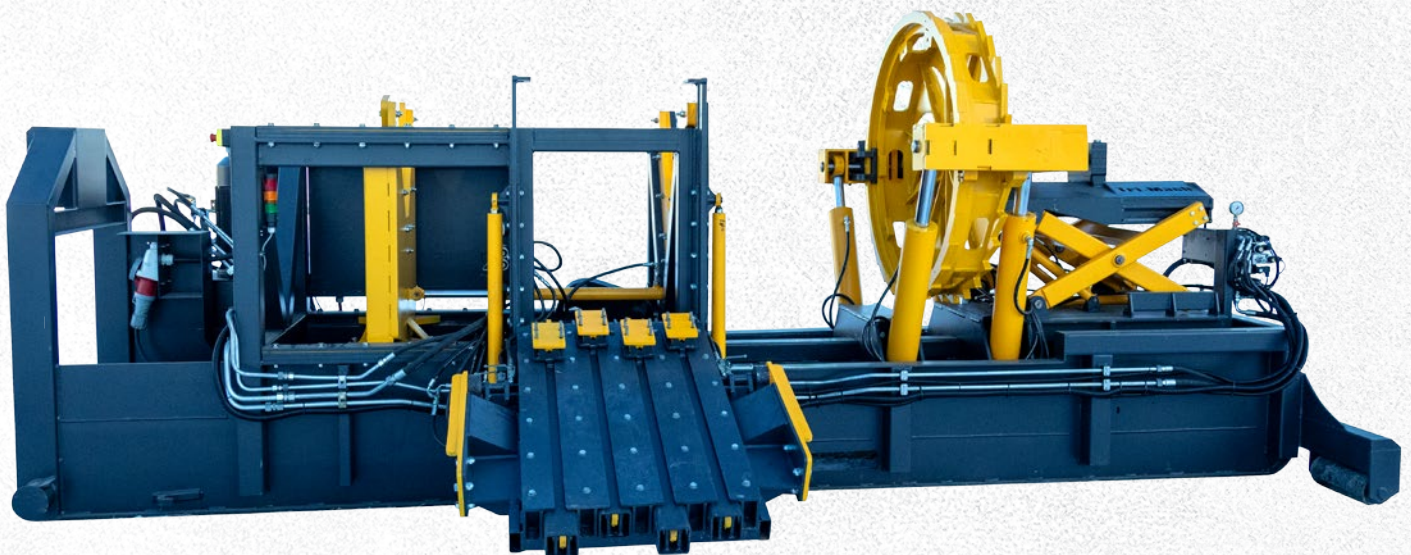
DIMENSIONS

(maximum breakout position)

Height = 2500mm

Width = 4000mm

Length = 5800mm



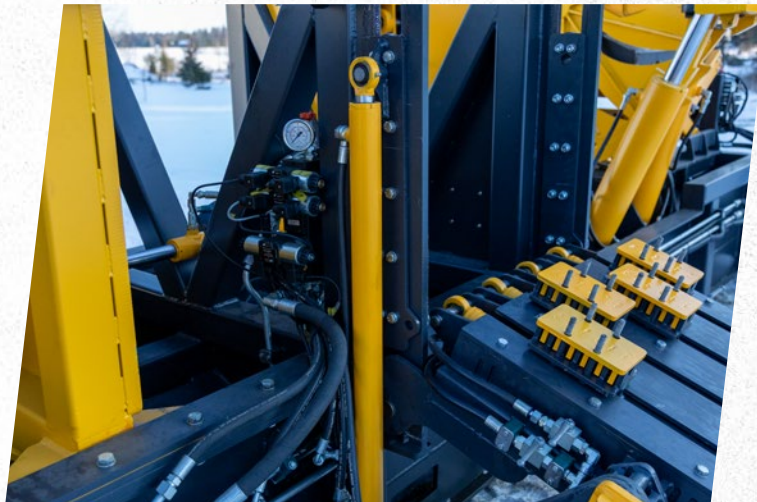
TOUGHEST DTH DRILLING TOOLS

Designed and manufactured in Finland by Tri-Mach Nordic Oy. Tri-Mach has nearly 30 years of experience in the design and manufacture of DTH Drilling Tools.

RADIO CONTROLLED



PATENTED HAMMER GRIP MECHANISM



TRANSITABLE WITH ROLL-OFF TRUCK



MORE THAN 30 YEARS OF EXPERIENCE IN MANUFACTURING THE TOUGHEST DTH DRILLING TOOLS

- › **DTH CASING RING BITS & PILOT BITS**
- › **DTH BUTTON BITS AND HOLE OPENERS**
 - › **DTH HAMMERS**
 - › **DTH SHOCK ABSORBERS**
- › **DTH DRILL PIPES (API + BECO + HEX)**
- › **HORIZONTAL CASING RING BITS**
- › **HORIZONTAL AUGER RODS**
 - › **DTH HAMMER OILS**
 - › **DTH ROTARY HEADS**
- › **DTH HAMMER BREAKOUT BENCHES**
- › **DTH CONSULTATION & EXPERTISE**



TRI-MACH NORDIC OY

Tampereentie 495, 33880 Lempäälä, Finland
www.trimach-drilltools.com